



# Oregon

Theodore R. Kulongoski, Governor

## Public Employees Retirement System

Headquarters:  
11410 S.W. 68<sup>th</sup> Parkway, Tigard, OR  
Mailing Address:  
P.O. Box 23700  
Tigard, OR 97281-3700  
(503) 598-7377  
TTY (503) 603-7766  
[www.oregon.gov/pers](http://www.oregon.gov/pers)

June 27, 2008

TO: Members of the PERS Board  
FROM: Kyle J. Knoll, Business Operations Manager  
SUBJECT: June 2008 Budget Report

<b>MEETING DATE</b>	<b>6/27/08</b>
<b>AGENDA ITEM</b>	<b>A.2.c. Budget</b>

### 2007-09 BUDGET UPDATE

Operating expenditures for the months of April and May 2008 were \$3,088,196 and \$2,922,332 respectively. Through the first eleven months (45.83%) of the biennium, the Agency has expended a total of \$32,746,322, or 40.30%, of our 2007-09 operating budget.

The positive budget variance for the biennium is currently projected at \$356,180.

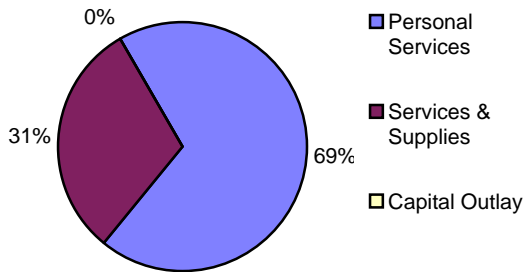
- The variance continues to include the costs of the COLA increases under the Department of Administrative Services (DAS) and Service Employees International Union 2007-09 Collective Bargaining Agreement, but does not include the additional budget limitation for those costs. DAS Budget and Management will be presenting a related funding request to the E-Board on June 27, 2008.
- Between January and May 2008, PERS actual expenditures have been \$1,225,145 less than projected expenditures for those five months. That is primarily due to the decrease in State Data Center (SDC) rates, and invoicing based on usage rather than assessments beginning July 1, 2007. Since the new rates and usage-based invoicing have resulted in increases for some agencies and decreases for other agencies, BAM will be presenting a related request to the E-Board on June 27, 2008. Based on PERS' decreased costs, that could result in un-scheduling just under \$3.5 million from PERS' 2007-09 budget limitation.
- In response to BAM's E-Board requests for COLA funding and SDC rate adjustments, the Legislative Fiscal Office will be making a recommendation to the June E-Board to net SDC and COLA adjustments for all agencies.
- An update on E-Board actions regarding 2007-09 COLA increases and SDC rate adjustments will be provided in the July 2008 Budget Report.

## 2007-09 Agency-wide Operations - Budget Execution Summary Budget Analysis For the Month of: May 2008

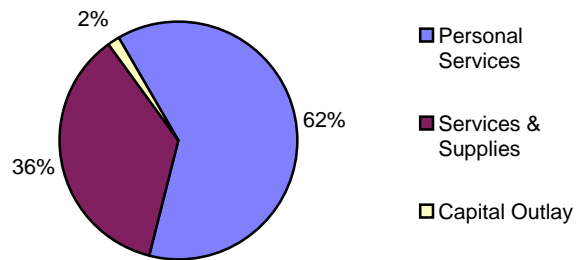
### Biennial Summary

Category	Actual Exp. To Date	Projected Expenditures	Total Est. Expend.	2007-09 LAB	Variance
Personal Services	22,631,652	29,959,823	52,591,475	50,692,368	(1,899,107)
Services & Supplies	10,103,646	17,422,559	27,526,205	29,611,077	2,084,872
Capital Outlay	11,024	766,262	777,286	947,701	170,415
Special Payments					
<b>Total</b>	<b>32,746,322</b>	<b>48,148,644</b>	<b>80,894,966</b>	<b>81,251,146</b>	<b>356,180</b>

Actual Expenditures

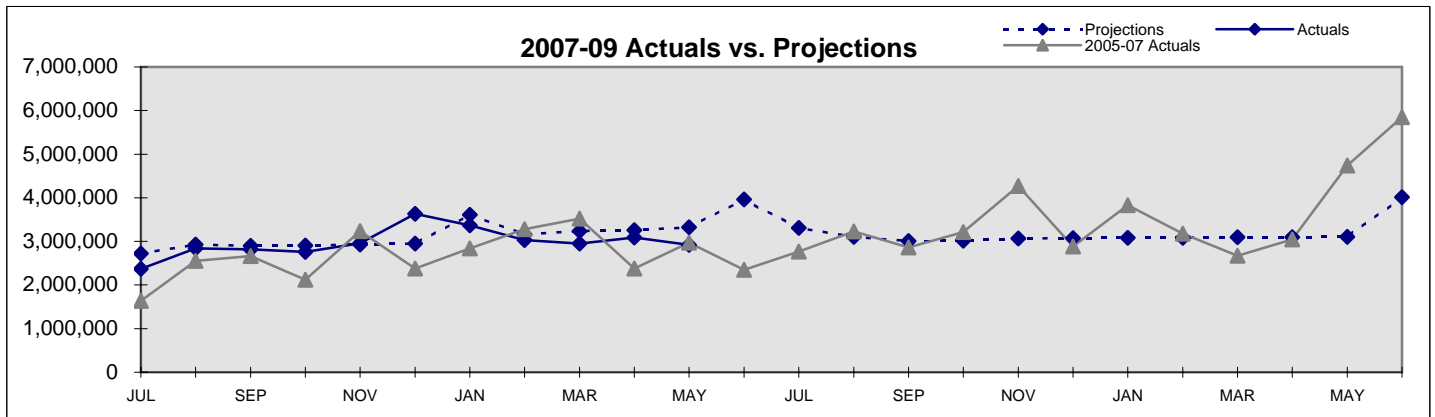


Projected Expenditures



### Monthly Summary

Category	Actual Exp.	Projections	Variance	Avg. Monthly Actual Exp.	Avg. Projected Expenditures
Personal Services	2,087,406	2,222,256	134,850	2,057,423	2,304,602
Services & Supplies	834,926	1,098,129	263,203	918,513	1,340,197
Capital Outlay				1,002	58,943
Special Payments					
<b>Total</b>	<b>2,922,332</b>	<b>3,320,385</b>	<b>398,053</b>	<b>2,976,938</b>	<b>3,703,742</b>



### 2005-07 Biennium Summary

Category	Actual Exp. To Date	Projected Expenditures	Total Est. Expend.	2005-07 LAB	Variance
Personal Services	42,804,552		42,804,552	46,875,869	4,071,317
Services & Supplies	31,107,541		31,107,541	27,460,026	(3,647,515)
Capital Outlay	534,468		534,468	679,533	145,065
Special Payments					
<b>Total</b>	<b>74,446,561</b>		<b>74,446,561</b>	<b>75,015,428</b>	<b>568,867</b>